

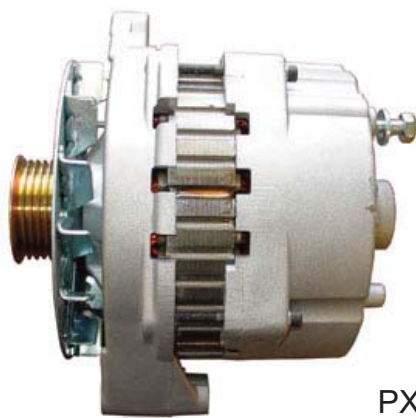


Get The PennTex Advantage!
 PERFORMANCE, ENDURANCE AND SATISFACTION

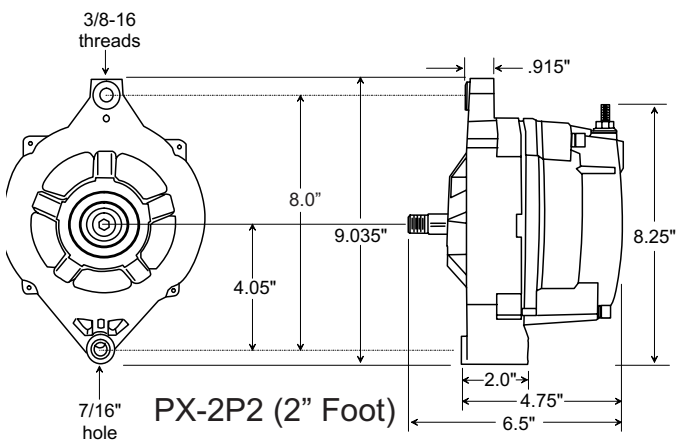
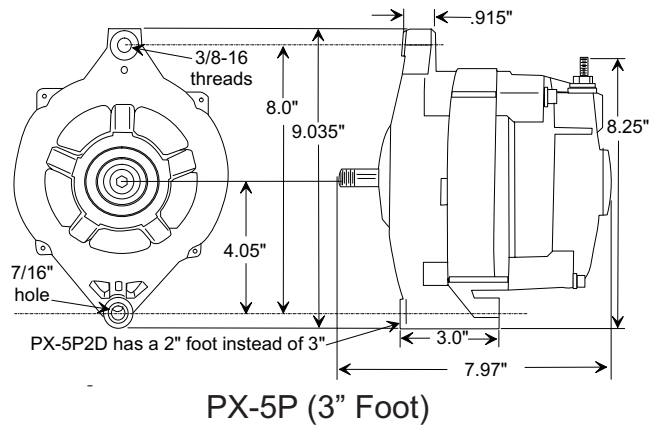
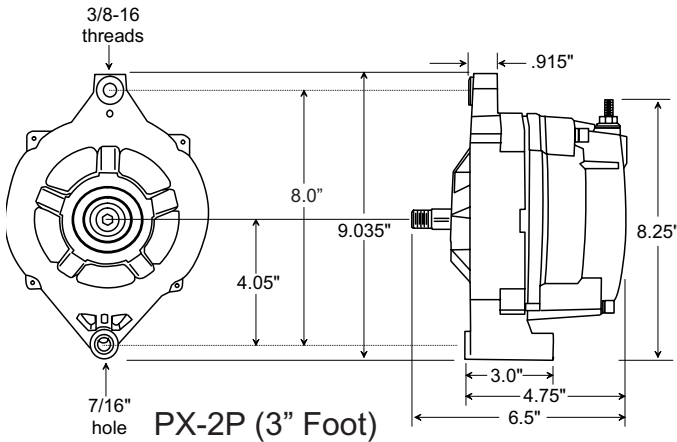
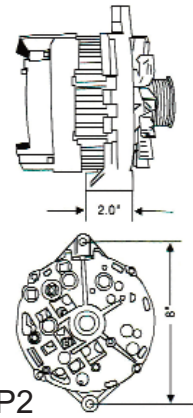
THE "P" MOUNT: THE MOST UNIVERSAL CASE STYLE FOR ADAPTING A PENNTEX ALTERNATOR TO PERFORMANCE VEHICLES



PX-2P2



PX-4P2



The "P"-style case has been used by OEM manufacturers since the 1960's. GM, Ford and Chrysler all used this design and we have three different alternator series that use it. The PX-4P2 has a 2 inch foot, while the PX-2 and PX-5 Series are available with a 2 inch or 3 inch mounting foot. All PennTex Charging systems use an external voltage regulator. Alan Grove Components has many alternator brackets that could mount a "P"-style alternator. Do careful measuring to see if one of their brackets and our alternator will fit your performance car or truck. Call us for more information.

PERFORMANCE, ENDURANCE AND SATISFACTION

PennTex
 INDUSTRIES, INC.

Manufacturers of
 High Efficiency Alternators and
 Mobile Electronic Devices.

Corporate:
 202 Plaza Drive
 Manchester, PA 17345
 Ph: 717/266-8762
 Fax: 717/266-7803

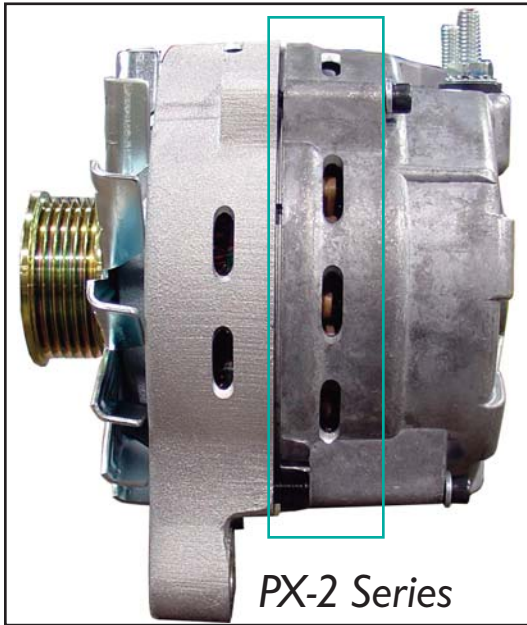
Manufacturing:
 7620 Flagstone Drive
 Fort Worth, TX 76118
 Ph: 817/590-2818
 Toll Free Sales/Tech: 877/590-7366
 Fax: 817/590-0505

www.penntexusa.com
 Email: sales@penntexusa.com or
 tech@penntexusa.com



HOW TO TELL A PX-2 PENNTEX ALTERNATOR FROM A PX-5 DUAL POSITIVE POST PENNTEX ALTERNATOR

(LOOK AT THE STATOR)



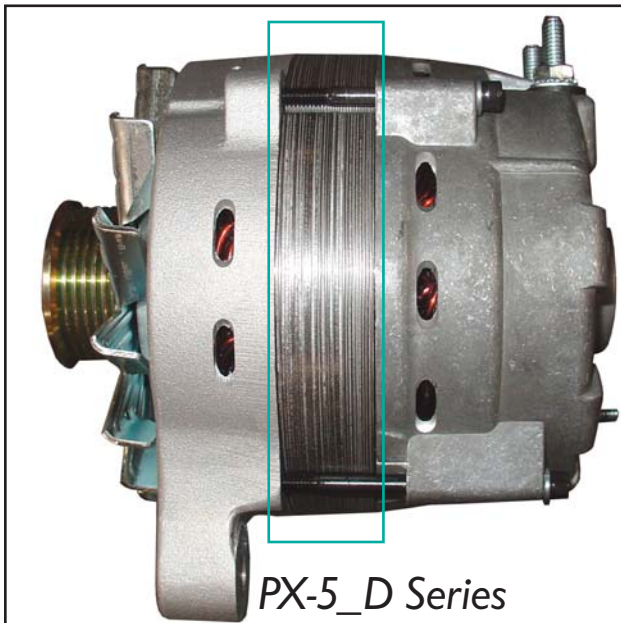
PX-2 Series Information

- 1) Note the very small space between the front and rear alternator housings. A PX-2 Series stator is not as wide as a PX-5 stator.
 - 2) A PX-2 Series rear housing is shorter in the rear bearing area because the PX-2 Series rear bearing is not as wide as a PX-5 Series rear bearing.
 - 3) A PX-2 Series alternator is approximately 1.5" shorter overall than a PX-5 Series.
 - 4) A PX-2 Series alternator has one positive and one negative battery post. Both posts are positive on a PX-5_D alternator.
- NOTE:** This same information can be applied to a PX-4G-5 series alternator vs. a PX-5 series alternator.

PX-5 Series Information

- 1) Note more than one inch of space between the front and rear alternator housings. A PX-5 Series stator is wider and the rotor is longer, so the PX-5 is longer than a PX-2.
- 2) A PX-5 Series rear housing is longer because of the wider rear bearing. PX-2 & PX-5 front housings usually are the same.
- 3) A PX-5_D Series alternator is approximately 1.5 inches longer overall than a PX-2 Series.
- 4) A PX-5_D Series alternator has 6 negative diodes in the rear housing and 12 positive diodes in heat sinks inside.
- 5) A PX-5_D Series alternator has two positive battery posts with a strap between the posts.
- 5) Because of the extra length of a PX-5, it might also require a bracket to fit some applications.
- 6) Because of the extra stator and rotor size, a PX-5 will put out more amperage than a PX-2. A 250-amp PX-5 is available.
- 7) PX-5 and PX-2 dimensions except for length are the same.
- 8) Because a PX-5 puts out more amperage, this model is recommended over a PX-2 for extreme-duty applications.

Scale: none



"_D" is a blank for the specific model like R, T, P, etc., followed by "D" for Dual Positive Posts on a PX-5 Series.

PERFORMANCE, ENDURANCE AND SATISFACTION

PenTex
INDUSTRIES, INC.

Manufacturers of
High Efficiency Alternators and
Mobile Electronic Devices.

Corporate:
202 Plaza Drive
Manchester, PA 17345
Ph: 717/266-8762
Fax: 717/266-7803

www.penntexusa.com
Email: sales@penntexusa.com or
tech@penntexusa.com

Manufacturing:
7620 Flagstone Drive
Fort Worth, TX 76118
Ph: 817/590-2818
Toll Free Sales/Tech: 877/590-7366
Fax: 817/590-0505

