

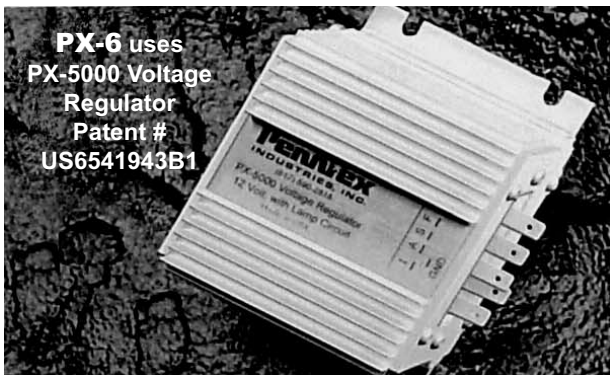
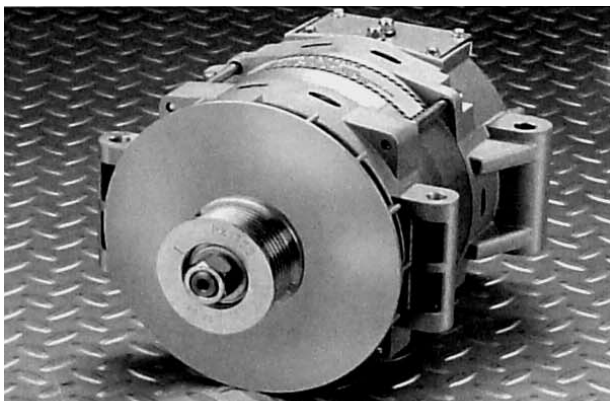
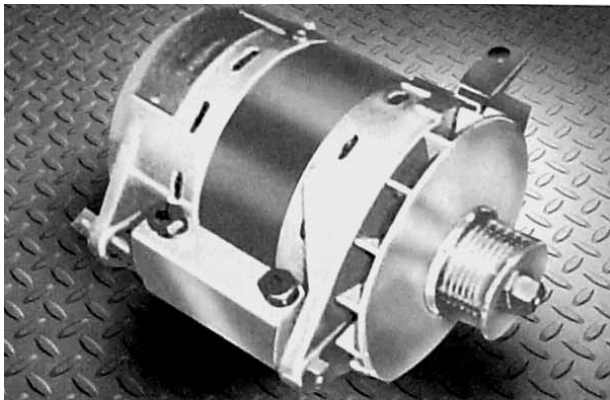
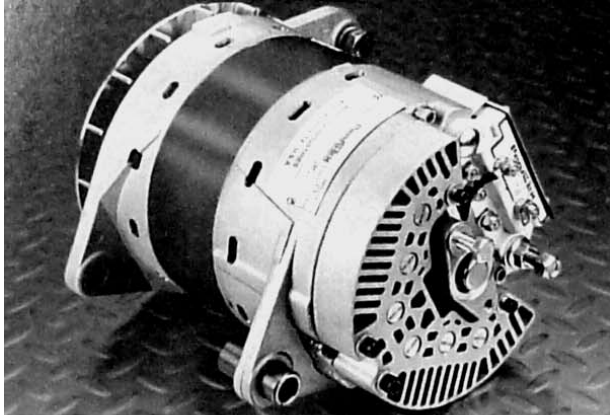


PennTex INDUSTRIES, INC.

MODEL

PX-6 Series 14-volt
275 & 350 amps

**HIGH AMPERAGE / HEAVY DUTY
ALTERNATORS /
CHARGING SYSTEMS**



**PX-6 uses
PX-5000 Voltage
Regulator
Patent #
US6541943B1**

275/260 AMPS

| PX-627 TESTED AND PROVEN | | |
|--------------------------|------------------|-------------|
| ROTOR RPM | AMPS@ 13.5 VOLTS | |
| | COLD (SAE) | HOT (200°F) |
| 1500 | 120 | 97 |
| 2000 | 190 | 167 |
| 2500 | 227 | 204 |
| 3000 | 247 | 225 |
| 3500 | 259 | 238 |
| 4000 | 269 | 247 |
| 4500 | 276 | 253 |
| 5000 | 280 | 257 |
| 6000 | 297 | 265 |

350/335 AMPS

| PX-635 TESTED AND PROVEN | | |
|--------------------------|------------------|-------------|
| ROTOR RPM | AMPS@ 13.5 VOLTS | |
| | COLD (SAE) | HOT (200°F) |
| 2000 | 185 | 160 |
| 2500 | 250 | 233 |
| 3000 | 281 | 266 |
| 3500 | 302 | 287 |
| 4000 | 317 | 303 |
| 5000 | 337 | 323 |
| 5500 | 341 | 328 |
| 6000 | 350 | 335 |

APPLICATIONS

- Buses, Firetrucks, Ambulances and all other vehicles that require high amperage output at engine idle.
- See application guide or contact PennTex for availability of specific application

OPTIONS

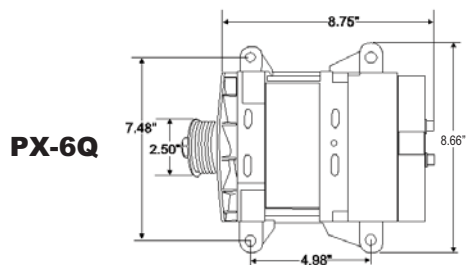
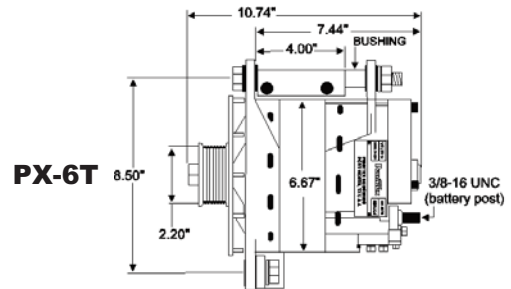
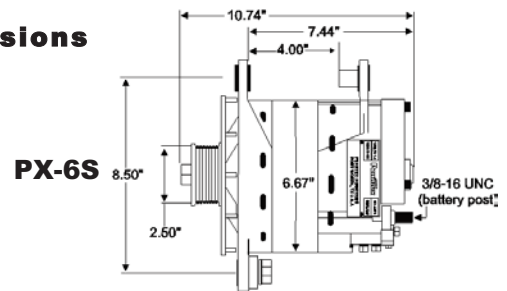
- 28 volt and other voltages available.

Specially designed for heavy duty, high amperage applications for vehicles that operate at less than highway speeds or idle for prolonged periods of time.

Special Features

- 1) 160 to 190 Amps output at engine idle speeds, depending on model: highest output of any alternator in its class.
- 2) 3/8" battery post.
- 3) Heavy duty hand wound high output stator.
- 4) Heavy duty dual plain balanced rotor.
- 5) Heavy duty long life brushes.
- 6) Heavy duty bearings with high temperature seals and grease.
- 7) Eighteen (18) press fit 60 amp diodes.
- 8) Specially designed patented heavy duty regulator that produces higher output ratings; runs cooler than industry standards.
- 9) Regulator has ground fault protection and high voltage protection.
- 10) Newly designed cooling fan for cooler operating temperatures.
- 11) Utilizes OEM belt and OEM mounting configurations - no brackets needed in most applications.
- 12) GXL wire standard in all harnesses.
- 13) Weight: Approximately 32 pounds.

Dimensions



PennTex Industries recommends using a minimum of 2 gauge battery and ground cable. For maximum performance, route 2 gauge battery cable, or larger, from the alternator battery post directly to the battery positive stud. The ground wire from the alternator should be a minimum of 2 gauge cable and be bolted directly to a chassis ground or to the negative side of the battery.

WARRANTY

PENNTEx INDUSTRIES, INC. STANDARD WARRANTY IS EIGHTEEN (18) MONTHS OR 75,000 MILES -- WHICHEVER OCCURS FIRST, WHEN INSTALLED ON A NEW OEM VEHICLE. AFTERMARKET INSTALLATIONS HAVE A WARRANTY OF TWELVE (12) MONTHS/UNLIMITED MILES.

PERFORMANCE, ENDURANCE AND SATISFACTION

Penntex
INDUSTRIES, INC.

Manufacturers of
High Efficiency Alternators and
Mobile Electronic Devices.

Corporate:
202 Plaza Drive
Manchester, PA 17345
Ph: 717/266-8762
Fax: 717/266-7803

www.penntexusa.com
E Mail: sales@penntexusa.com

Manufacturing:
7620 Flagstone Drive
Fort Worth, TX 76118
Ph: 817/590-2818
Toll Free: 877/590-7366
Fax: 817/590-0505

